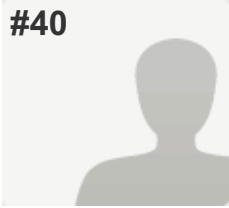


# Arizona Legislative Candidate Questionnaire

#40



**COMPLETE**

**Collector:** Email Invitation 1 (Email)  
**Started:** Tuesday, July 22, 2014 2:03:53 PM  
**Last Modified:** Tuesday, July 22, 2014 2:26:40 PM  
**Time Spent:** 00:22:47  
**Email:** mpancrazi1@roadrunner.com  
**IP Address:** 24.248.60.130

## PAGE 2: CAMPAIGN INFORMATION

<b>Q1: Candidate Name</b>	Margaret"Lynne" Pancrazi
<b>Q2: Party Affiliation</b>	Democrat
<b>Q3: Legislative Chamber</b>	Senate
<b>Q4: Legislative District</b>	District 4
<b>Q5: Campaign Website</b>	Pancrazi4senate.com
<b>Q6: Phone Number</b>	928-782-1455
<b>Q7: Email Address</b>	mpancrazi1@roadrunner.com

## PAGE 3: BACKGROUND INFORMATION

<b>Q8: Have you ever been involved in any animal protection issues?</b>	YES, Comments I have served in the state legislature for 8 years so I have addressed many animal protection issues. Most recently the Grey Wolf proposed legislation.
<b>Q9: Do you have, or have you had in the past, any companion animals that have had an impact on you?</b>	YES, Comments I have had one or two dogs all my life. After my last baby died my husband and I decided no animals until I am done serving in the legislature. Although we did inherit a desert tortoise named Groundy.
<b>Q10: Do you financially or philosophically support any local or national animal protection organizations?</b>	YES

## PAGE 4: FARM ANIMALS

# Arizona Legislative Candidate Questionnaire

**Q11: Do you support removing farm animals and horses from protection under Arizona's animal cruelty law and placing them under new, weaker laws in the agriculture code?**

YES

## PAGE 5: COMPANION ANIMALS

**Q12: Would you support legislation to require registration, oversight and/or standards of care for animals in boarding facilities and breeding kennels?**

YES,

Comments

The facilities must be restricted to domestic animals and not livestock including horses.

## PAGE 6: ANIMAL CONTROL

**Q13: Do you believe that Arizona should have more uniform animal control laws to prevent inhumane treatment of animals?**

YES,

Comments

These must be restricted to domestic animals and not livestock including horses and working dogs.

## PAGE 7: WILDLIFE AND HABITAT

**Q14: Do you support a process that includes less than 1% of hunters & anglers and limits the voice of a majority of Arizonans to participate in the Arizona Game & Fish Commission appointment process?**

NO,

Comments

I voted against it in 2009 and would vote against it again if given the opportunity.

**Q15: Do you believe that SB 1200 should be repealed?**

YES

## PAGE 8: GREYHOUND RACING

**Q16: Would you support legislation to repeal multi-million dollar tax breaks to dog tracks?**

YES

## PAGE 9: CITIZEN INITIATIVE PROCESS AND ANIMAL PROTECTION

**Q17: Do you support Arizona's public initiative process?**

YES

## Arizona Legislative Candidate Questionnaire

**Q18: If YES, what steps would you take to protect our public initiative process?**

I voted against the elections omnibus bill which I am sure will be returning to the legislature in 2014 so keep a look out for it.