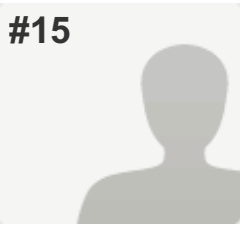


#15

**COMPLETE****Collector:** Web Link 8 (Web Link)**Started:** Wednesday, September 24, 2014 2:16:48 PM**Last Modified:** Wednesday, September 24, 2014 6:36:03 PM**Time Spent:** 04:19:14**IP Address:** 24.121.32.61

PAGE 2: CAMPAIGN INFORMATION

Q1: Candidate Name	Lanny Morrison
Q2: Party Affiliation	Democrat
Q3: Legislative Chamber	House
Q4: Legislative District	LD-6
Q5: Campaign Website	www.MorrisonforAZHouse.com
Q6: Phone Number	928-626-3937
Q7: Email Address	lannymorrison@npgcable.com

PAGE 3: BACKGROUND INFORMATION

Q8: Have you ever been involved in any animal protection issues?	NO, Comments Not formally, but informally by rescuing some dogs, cats, and horses to live with us
---	---

Q9: Do you have, or have you had in the past, any companion animals that have had an impact on you?

YES,

Comments

Many rescued dogs and cats. Mort, a shih tzu who is still with us, has a special place in our hearts. He found us as he was wandering homeless at the environmental education center my wife directed back in Maryland. When all efforts to locate his previous home proved fruitless, we brought him to ours, incredibly scruffy, unneutered, and with a deformed jaw that causes his tongue to hang out all the time. From the very beginning, he has had the singular ability to comfort others -- be it our grandchildren as they would struggle from time to time with the frustrations of childhood, or someone grieving for a lost one, or someone in physical pain. He would just instinctively want to and know how to make them feel better. He would have been a therapy dog, but he failed his test (not with humans, but by paying way to much attention to other dogs by wanting to be buddies). Even now, as he struggles with declining abilities due to nasal sarcoma, he still provides immeasurable love and comfort to all and it is most certainly returned. You can find us with him on my campaign website.

Q10: Do you financially or philosophically support any local or national animal protection organizations?

YES,

If so, which ones?
 HSUS, Best Friends, and Second Chance for Animals, among others

PAGE 4: FARM ANIMALS

Q11: Do you support removing farm animals and horses from protection under Arizona's animal cruelty law and placing them under new, weaker laws in the agriculture code?

NO

PAGE 5: COMPANION ANIMALS

Q12: Would you support legislation to require registration, oversight and/or standards of care for animals in boarding facilities and breeding kennels?

YES

PAGE 6: ANIMAL CONTROL

Q13: Do you believe that Arizona should have uniform animal control laws to prevent inhumane treatment of animals?

YES

PAGE 7: WILDLIFE AND HABITAT

Q14: Do you support a process that includes less than 1% of hunters & anglers and limits the voice of a majority of Arizonans to participate in the Arizona Game & Fish Commission appointment process?

NO

Q15: Do you believe that SB 1200 should be repealed?

YES

PAGE 8: GREYHOUND RACING

Q16: Would you support legislation to repeal multi-million dollar tax breaks to dog tracks?

YES

PAGE 9: CITIZEN INITIATIVE PROCESS AND ANIMAL PROTECTION

Q17: Do you support Arizona's public initiative process?

YES

Q18: If YES, what steps would you take to protect our public initiative process?

Fight any efforts to weaken the public initiative process and, thereby, strengthening the Legislature's ongoing beholding to special interests at the expense of regular citizens.