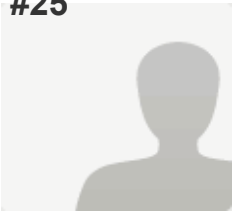


#25

**COMPLETE**

**Collector:** Email Invitation 3 (Email)  
**Started:** Tuesday, August 16, 2016 6:53:46 PM  
**Last Modified:** Friday, August 19, 2016 1:03:21 PM  
**Time Spent:** Over a day  
**First Name:** KIRSTEN  
**Last Name:** ENGEL  
**Email:** kengel48@gmail.com

**Custom Data:** State Representative - District No. 10

---

**PAGE 2: CAMPAIGN INFORMATION**

<b>Q1: Candidate Name</b>	Kirsten Engel
<b>Q2: Party Affiliation</b>	Democrat
<b>Q3: Legislative Chamber</b>	House
<b>Q4: Legislative District</b>	10
<b>Q5: Campaign Website</b>	www.engelforarizona.com
<b>Q6: Phone Number</b>	(520) 261-8820
<b>Q7: Email Address</b>	EngelforArizona@gmail.com

---

**PAGE 3: BACKGROUND INFORMATION**

<b>Q8: Have you ever been involved in any animal protection issues?</b>	NO
<b>Q9: Do you have, or have you had in the past, any companion animals that have had an impact on you?</b>	YES, Comments I grew up in a household with dogs and my family has two dogs now. Our dogs are like family members. They bring out the best in us. I love the connection between an animal and a human. Caring for one of our dogs has been an important maturing experience for my 11—year old daughter.
<b>Q10: Do you financially or philosophically support any local or national animal protection organizations?</b>	YES, If so, which ones? I regularly contribute to the Humane Society of Southern Arizona.

---

**PAGE 4: FARM ANIMALS**

**Q11: Do you support removing farm animals and horses from protection under Arizona's animal cruelty law and placing them under new, weaker laws in the agriculture code?** NO

---

#### PAGE 5: CITIZEN INITIATIVE PROCESS AND ANIMAL PROTECTION

---

**Q12: Do you support Arizona's public initiative process?** YES

---

**Q13: If YES, what steps would you take to protect our public initiative process?**

I would oppose proposed legislation to weaken our public initiative process.

---

#### PAGE 6: ANIMAL CRUELTY LAW

---

**Q14: Do you support strengthening Arizona's animal cruelty laws to correct loopholes that make it difficult to prosecute animal abusers?** YES

---

**Q15: Would you support legislation to make it more difficult for regions acts of animal cruelty charged as felonies to be reduced to misdemeanors?** YES

---

#### PAGE 7: WILDLIFE AND HABITAT

---

**Q16: Do you support a process that includes less than 1% of hunters & anglers and limits the voice of a majority of Arizonans to participate in the Arizona Game & Fish Commission appointment process?** NO

---

**Q17: Do you believe that the AZ Game and Fish Commission Appointment Recommendation Board should be repealed?** YES

---

#### PAGE 8: ENDANGERED WOLVES

---

**Q18: Do you support legislation that weakens protection for endangered Mexican gray wolves?** NO

---

#### PAGE 9: CAPTIVE DOLPHINS IN ARIZONA

---

**Q19: Do you support captive dolphin programs for human entertainment?** NO

---

PAGE 10: ANIMAL CONTROL

---

**Q20: Do you believe that Arizona should have more uniform animal control laws to prevent inhumane treatment of animals?**

---

YES