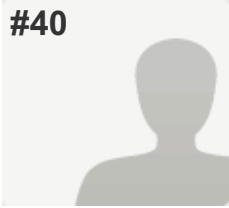


Arizona Legislative Candidate Questionnaire

#40



COMPLETE

Collector: Email Invitation 1 (Email)
Started: Tuesday, July 22, 2014 2:03:53 PM
Last Modified: Tuesday, July 22, 2014 2:26:40 PM
Time Spent: 00:22:47
Email: mpancrazi1@roadrunner.com
IP Address: 24.248.60.130

PAGE 2: CAMPAIGN INFORMATION

Q1: Candidate Name	Margaret"Lynne" Pancrazi
Q2: Party Affiliation	Democrat
Q3: Legislative Chamber	Senate
Q4: Legislative District	District 4
Q5: Campaign Website	Pancrazi4senate.com
Q6: Phone Number	928-782-1455
Q7: Email Address	mpancrazi1@roadrunner.com

PAGE 3: BACKGROUND INFORMATION

Q8: Have you ever been involved in any animal protection issues?	YES, Comments I have served in the state legislature for 8 years so I have addressed many animal protection issues. Most recently the Grey Wolf proposed legislation.
Q9: Do you have, or have you had in the past, any companion animals that have had an impact on you?	YES, Comments I have had one or two dogs all my life. After my last baby died my husband and I decided no animals until I am done serving in the legislature. Although we did inherit a desert tortoise named Groundy.
Q10: Do you financially or philosophically support any local or national animal protection organizations?	YES

PAGE 4: FARM ANIMALS

Arizona Legislative Candidate Questionnaire

Q11: Do you support removing farm animals and horses from protection under Arizona's animal cruelty law and placing them under new, weaker laws in the agriculture code?

YES

PAGE 5: COMPANION ANIMALS

Q12: Would you support legislation to require registration, oversight and/or standards of care for animals in boarding facilities and breeding kennels?

YES,

Comments

The facilities must be restricted to domestic animals and not livestock including horses.

PAGE 6: ANIMAL CONTROL

Q13: Do you believe that Arizona should have more uniform animal control laws to prevent inhumane treatment of animals?

YES,

Comments

These must be restricted to domestic animals and not livestock including horses and working dogs.

PAGE 7: WILDLIFE AND HABITAT

Q14: Do you support a process that includes less than 1% of hunters & anglers and limits the voice of a majority of Arizonans to participate in the Arizona Game & Fish Commission appointment process?

NO,

Comments

I voted against it in 2009 and would vote against it again if given the opportunity.

Q15: Do you believe that SB 1200 should be repealed?

YES

PAGE 8: GREYHOUND RACING

Q16: Would you support legislation to repeal multi-million dollar tax breaks to dog tracks?

YES

PAGE 9: CITIZEN INITIATIVE PROCESS AND ANIMAL PROTECTION

Q17: Do you support Arizona's public initiative process?

YES

Arizona Legislative Candidate Questionnaire

Q18: If YES, what steps would you take to protect our public initiative process?

I voted against the elections omnibus bill which I am sure will be returning to the legislature in 2014 so keep a look out for it.